

TWENTY TWO BISHOPSGATE

LONDON EC2

YOU GET MORE
ON THE 30TH FLOOR...





MORE THAN AN OFFICE

11,614 sq ft of landmark CAT A space
in the City's most iconic building,
with world-class facilities including immersive
gym, food market and wellbeing centre.



- ↑ The Lobby Art Walk
- ← The Market
- ↘ End of Journey Facilities



New CAT A
specification



100,000 sq ft
of occupier
amenity space



WiredScore
Platinum Rating



World class end
of trip facilities



A four story
glazed lobby



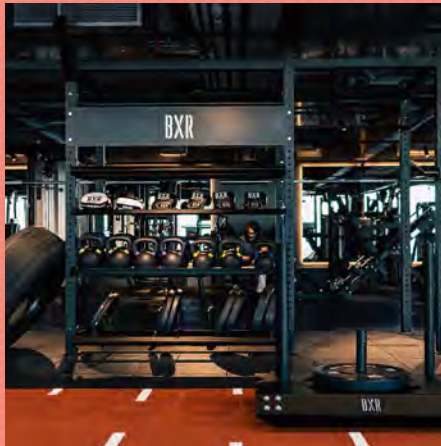
Highest climbing wall
in the country

MORE FUN

The buildings amenities create a place where people thrive, with an emphasis on community, learning and sharing.

BXR City Gym ↘

With City views like no other, BXR City can be found on the 25th floor. A fitness experience that simply cannot be found elsewhere.



The Market ↗

Home to a restaurant and terraced bar, food stalls, as well as a dedicated events space and a hidden speakeasy. The Market supplies nutritious food for the body and mind with sustainable practices ensuring a zero-waste policy.



The Retreat ↘

A dedicated space to support and promote the value of physical and mental health at work.



↖ XCHG

With collaboration at the core, XCHG is an on-site community for meetings, events and co-working, a dedicated space for great minds to connect.



↖ Active Commuter Park

With space for over 1,000 bicycles, 75 showers and over 1,300 secure lockers. There are hosts on hand to deal with any bike-related queries, and book in repairs whilst you work.



↖ Convene

A premium meeting, event, and workplace, from smaller meeting rooms to a 300+ person auditorium all bookable as short-term space.

MORE LIGHT

MORE SPACE



Backup generators



24 double decked passenger lifts



4-pipe fan coil air conditioning



1:8 sq m occupancy



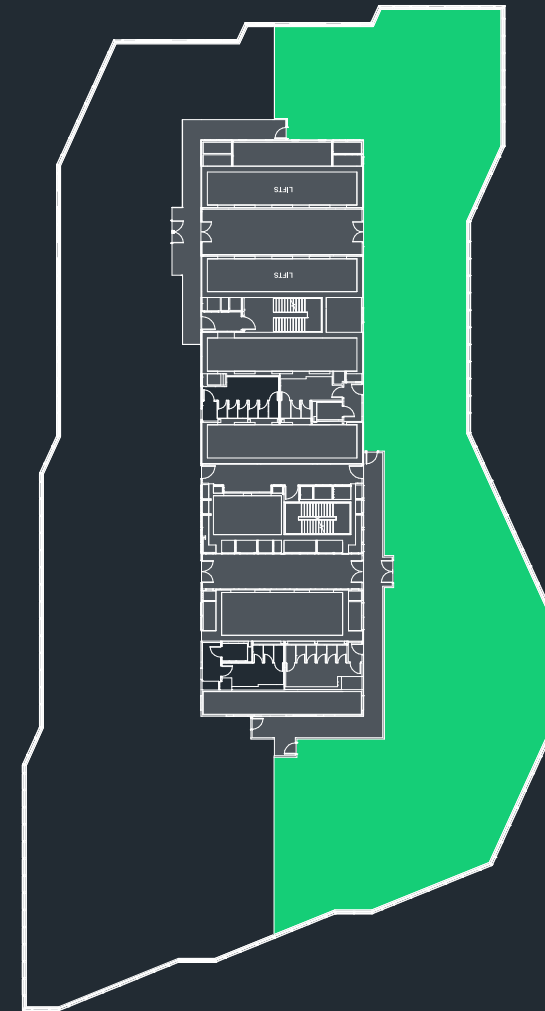
Floor to ceiling glazing with exceptional views



04 / THE SPACE

Part Level 30

11,614 Sq Ft / 1,078.98 Sq M



For indicative purposes only. Not to scale.

NORTH



TWENTY TWO BISHOPSGATE



Bakara
Broadgate Circle
The Ned



Old Spitalfields Market
Coya
The Royal Exchange

MORE CITY

The building occupies a prominent in the heart of City and benefits from excellent transport links including access the Elizabeth line at Liverpool Street.



All journey times in minutes. Source: TfL



MORE DETAILS

For further information or to arrange a viewing
please contact the sole letting agents:

Artie Taylor
07866 203 403
artie.taylor@savills.com

Catherine Owen
07977 172 821
catherine.owen@savills.com



Savills, their clients and any joint agents give notice that: 1. They are not authorised to make or give any representations or warranties in relation to the property either here or elsewhere, either on their own behalf or on behalf of their client or otherwise. They assume no responsibility for any statement that may be made in these particulars. These particulars do not form part of any offer or contract and must not be relied upon as statements or representations of fact. 2. Any areas, measurements or distances are approximate. The text, photographs and plans are for guidance only and are not necessarily comprehensive. It should not be assumed that the property has all necessary planning, building regulation or other consents and Savills have not tested any services, equipment or facilities. Purchasers must satisfy themselves by inspection or otherwise. November 2023.